

# Market Data Services

A catalogue of services for the  
non-household water market



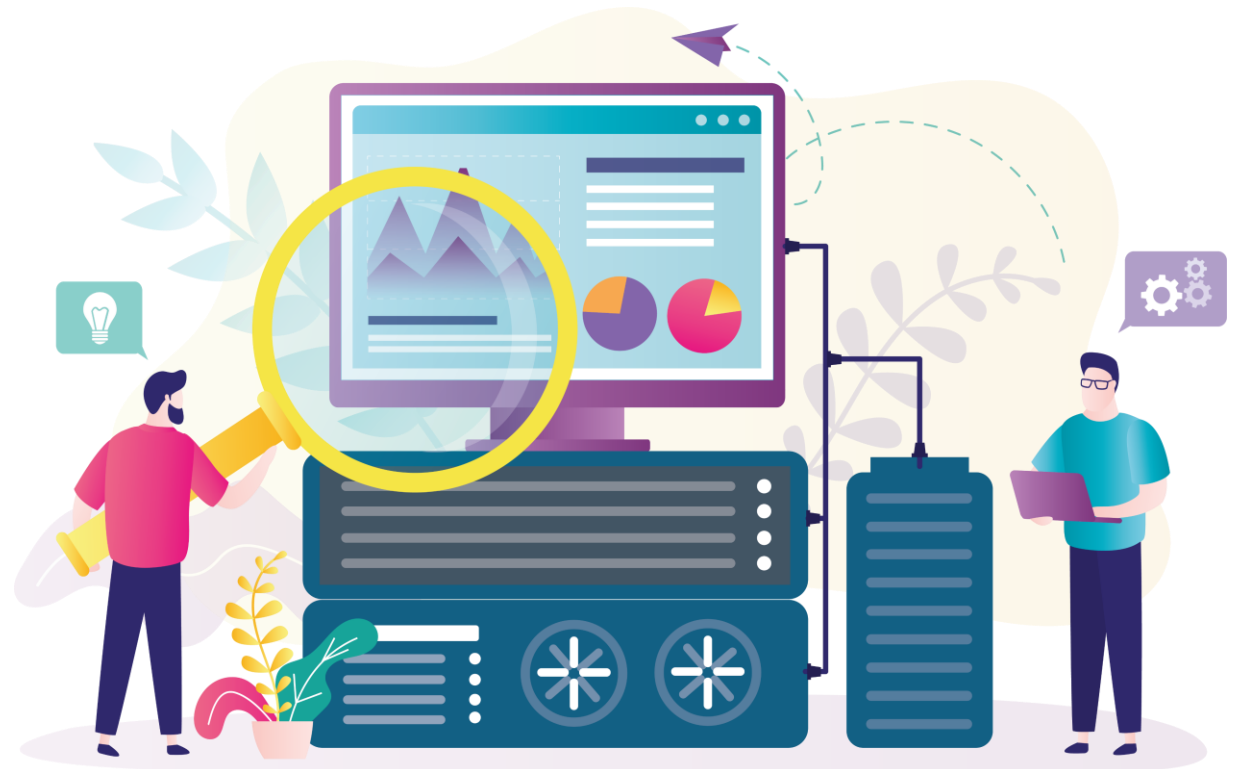
# Introduction

The Market Data Service catalogue provides a collated reference of all non-code mandated data services offered by MOSL.

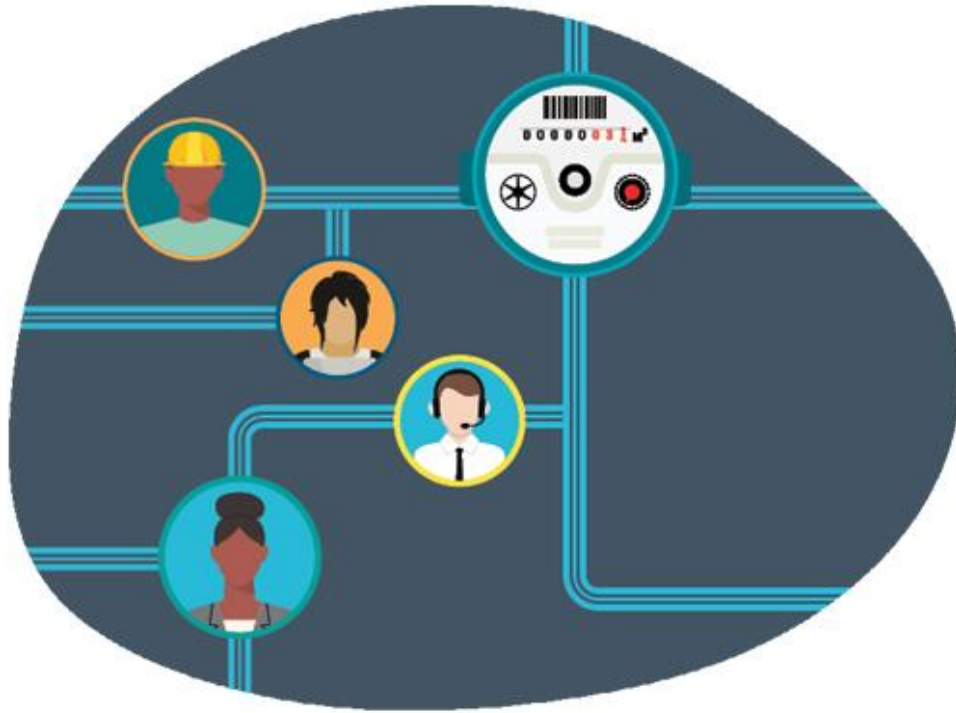
As market operator for the non-household water market, we act as custodians of the central market data. Our data services are provided to enhance, organise, share, or calculate information, as well as improve the availability and validity of data.

These services use various sources of data held in MOSL's data warehouse. This includes data sourced from market systems such as the Central Market Operating System (CMOS) and the Bilaterals hub and monthly settlement and performance data, as well as external sources such as geographic contextual data from water companies and the Environment Agency.

Our data services can be accessed via a range of channels depending on the granularity of the data provided and access permissions. Whilst the majority of these services have been developed for trading parties, MOSL is increasingly adopting an 'open first' approach in line with [Ofwat's H2Open](#) paper which calls for greater open data across the water industry. This is further evidenced by MOSL's [Data User Persona](#) analysis, which identified the wider value that can be derived from making market data more openly available.



# Introduction



MOSL's data services further support the delivery of our core services, such as performance and audit, and market improvement initiatives defined in the [Market Performance Operating Plan](#), as well as the key improvement programmes detailed in [MOSL's business plan](#).

Our Data Services have been developed in line with MOSL's strategic vision to "use our collective expertise and independent insight to deliver the best outcomes for customers and the environment". They are documented separately from the code-mandated data services, which are outlined in the [code subsidiary documents](#) (specifically CSD 0302 Standing Reports and Data Extracts and CSD 0201 Settlement Timetable and Reporting).



# Our data services

1  
Dashboards

2  
Maps

3  
Market  
summaries  
and metrics

4  
Data  
Import

5  
Enriched  
market  
data

6  
Formatted  
data

7  
Application  
Programming  
Interface (API)

8  
Data  
Analysis

9  
Data  
Insight

10  
Supporting  
Information



# 1. Dashboards (1/6)

A self-serve view of enriched aggregated market data that can be filtered by market dimensions such as trading party, consumption banding and geographic context. Public dashboards have been developed for each subject area of the market, with additional operational dashboards containing granular data available to individual trading parties.

Title	Description	Subject	Status	Release date	Channel	Access level	Audience	Refresh frequency	Refresh date	Link
Bilaterals Process Prioritisation dashboard	Document to describe the order in which MOSL proposes to address the introduction of Bilateral processes	Supply and Services	Active	12/08/2021	MOSL website	Public	All	On demand	On demand	<a href="#">View</a>
Consumption by Industry dashboard	Dashboard to analyse the water consumption by industry, exploiting the enhanced customer segmentation derived by the increased data quality	Environmental Impact	Planned	TBC	MOSL website	Public	All	Month	As required	
Data Quality dashboard	Low-level dashboard highlighting data quality issues across all market meters and premises	Trading Party Performance	Active	25/05/2023	MyMOSL	Restricted	Trading Parties	Month	Business Day 2	<a href="#">View</a>
Department for Education (DfE) dashboard	Analysis of water usage in the school business segment for the DfE	Environmental Impact	Active	25/05/2023	MyMOSL	Restricted	Department for Education	Month	Business Day 2	<a href="#">View</a>
Drought Restrictions dashboard	Summary of current drought restriction phases in England and Wales, and the number of Water supply points that exist within postal sectors affected by drought restrictions	Environmental Impact	Active	18/08/2022	MOSL website	Public	All	Month	Business Day 9	<a href="#">View</a>
Drought Restrictions dashboard (extract)	Detailed view of the current drought restriction phases in England and Wales for each postcode-mapped Water Resource Zone (WRZ)	Environmental Impact	Active	25/05/2023	MyMOSL	Restricted	Trading Parties	Month	Business Day 9	<a href="#">View</a>



# 1. Dashboards (2/6)

Title	Description	Subject	Status	Release date	Channel	Access level	Audience	Refresh frequency	Refresh date	Link
Greenhouse Gas Emissions dashboard	Overview of water and sewerage consumption trends and related greenhouse gas emissions for each trading party, service category and customer industry segment, applying emission rates to consumption volumes available on the volumetric service components in CMOS	Environmental Impact	Active	05/11/2021	MOSL website	Restricted	Trading Parties	Month	Business Day 9	<a href="#">View</a>
Holistic Reporting dashboard	Holistic view of trading party performance and peer comparison by drawing from multiple performance indicators, including defined standards (Market Performance Standards (MPS) and Operational Performance Standards (OPS)) and Additional Performance Indicators (APIs)	Trading Party Performance	Active	25/05/2023	MyMOSL	Restricted	Trading Parties	Month	Business Day 2	<a href="#">View</a>
Key Performance Indicators (KPIs) dashboard	Quarterly performance dashboards outlining progress against MOSL's KPIs and 2022-25 Business Plan	Metrics	Active	03/08/2022	MOSL website	Public	All	Quarter	One month after end of quarter	<a href="#">View</a>
Market Performance Standard (MPS) dashboard	High-level overview of MPS data: market performance and trading party comparison for each standard over time	Trading Party Performance	Active	23/06/2021	MOSL website	Public	All	Month	Business Day 16	<a href="#">View</a>
Meter Reads dashboard	Overview of each type of meter read submitted to the market (i.e., re-reads, customer reads, remote reads and wholesaler reads) for each trading party, read method, location and frequency	Meter Reads	Active	15/02/2022	MOSL website	Public	All	Month	Business Day 2	<a href="#">View</a>
Metering dashboard	A high-level overview of the number of meters in the market for each meter size, technology, occupancy status (Vacancy), location and read frequency, showing trends and peer comparison of Long Unread Meters (LUMs)	Market Meters	Active	15/12/2021	MOSL website	Public	All	Month	Business Day 2	<a href="#">View</a>



# 1. Dashboards (3/6)

Title	Description	Subject	Status	Release date	Channel	Access level	Audience	Refresh frequency	Refresh date	Link
Missing Reads and Unpaired SPIDs dashboard	Report detailing the missing reads data and the unpaired Supply Points for each trading party		Active	25/05/2023	MyMOSL	Restricted				<a href="#">View</a>
Occupancy Status and SPID Registration History	View of changes of occupancy status and registration for supply points		Active	25/05/2023	MyMOSL	Restricted	Trading Parties			<a href="#">View</a>
Ofwat dashboard	View of consumption-related market information restricted to the usage of Ofwat		Active	25/05/2023	MyMOSL	Restricted	Ofwat			<a href="#">View</a>
Operational Performance Standard (OPS) dashboard	High-level overview of OPS data (both before and after the Bilaterals solution): market performance and trading party comparison for each standard over time	Trading Party Performance	Active	23/06/2021	MOSL website	Public	All	Month	Business Day 16	<a href="#">View</a>
Retailer Measure of Experience (R-MeX) dashboard	Interactive view of the R-MeX surveys - a measurement of wholesaler service to their retailers - including aggregated scores for each wholesaler and for each service category, as well as league tables	Trading Party Performance	Active	27/04/2022	MOSL website	Public	All	Half-year	Two weeks after survey deadline	<a href="#">View</a>



# 1. Dashboards (4/6)

Title	Description	Subject	Status	Release date	Channel	Access level	Audience	Refresh frequency	Refresh date	Link
Retailer Settlement dashboard	Analysis of retailer settlement data based on key metrics: actual meter reads, estimated consumption, estimated accuracy, age of last meter read, missed meter reads	Wholesaler Settlement	Active	25/05/2023	MyMOSL	Restricted	Trading Parties	Month	Business Day 9	<a href="#">View</a>
School Benchmark dashboard (extract)	School-level view of average school water usage metrics for each trading party, in collaboration with the Department of Education. A Proof of Concept towards a national water consumption benchmarking model across industry segments to promote water efficiency	Environmental Impact	Active	25/05/2023	MyMOSL	Restricted	Trading Parties	Month	Business Day 2	<a href="#">View</a>
School Benchmark dashboard (summary)	Overview of the variance of average school water usage (measured in litres per day) at national, school and pupil level for each trading party, in collaboration with the Department for Education. Proof of concept towards a national water consumption benchmarking model across industry segments to promote water efficiency	Environmental Impact	Active	09/11/2022	MOSL website	Public	All	Month	Business Day 2	<a href="#">View</a>
Service Components dashboard	High-level overview of all chargeable services, relating to water supply and sewerage, provided by each wholesaler, and the utilisation of each service component for each wholesaler	Supply and Services	Active	23/03/2022	MOSL website	Public	All	Month	Business Day 2	<a href="#">View</a>
Settlement dashboard	Summary of settlement metrics	Wholesaler Settlement	Active	25/05/2023	MyMOSL	Restricted	Trading Parties	Month	Business Day 9	<a href="#">View</a>
Settlement on YVE or ILE dashboard	Report listing if the meters are settled on yearly volume estimates (YVE) or industry level estimates (ILE)	Wholesaler Settlement	Active	25/05/2023	MyMOSL	Restricted	Trading Parties	Cumulative	Business Day 21	<a href="#">View</a>





# 1. Dashboards (5/6)

Title	Description	Subject	Status	Release date	Channel	Access level	Audience	Refresh frequency	Refresh date	Link
Settlement Parity dashboard	Provides wholesalers an understanding on their "Settlement Parity" and if they are within a common reference point of plus or minus five per cent. Also provides meter read activity that preceded the calculations of R1 Settlement	Wholesaler Settlement	Active	25/05/2023	MyMOSL	Restricted	Trading Parties	Month	Business Day 9	<a href="#">View</a>
Settlement-based Consumption dashboard	Overview of water consumption trends from settlement data for each trading party, settlement run, service category (water and sewerage) and read type (actual versus estimated)	Wholesaler Settlement	Active	28/10/2021	MOSL website	Public	All	Month	Business Day 9	<a href="#">View</a>
Supply Points dashboard	High-level overview of the supply points in the market: number, repartition between trading parties and consumption bands	Supply and Services	Active	10/08/2021	MOSL website	Public	All	Month	Business Day 9	<a href="#">View</a>
Switching dashboard	High-level overview of trends of switching rates in the market, using T108 transactions data, showing a breakdown of switches at a transactional level, the number of SPIDs that have switched at least once, the meter read methods and the number of incoming and outgoing switches per retailer	Switching	Active	02/12/2021	MOSL website	Public	All	Month	Business Day 2	<a href="#">View</a>
Switching dashboard (extract)	Overview of trends of efficiency of switching, rate of types of submitted transfer reads (actuals, estimates and late reads) and rate of unpaired supply points switched	Switching	Active	25/05/2023	MyMOSL	Restricted	Trading Parties	Month		<a href="#">View</a>



# 1. Dashboards (6/6)

Title	Description	Subject	Status	Release date	Channel	Access level	Audience	Refresh frequency	Refresh date	Link
Vacancy dashboard	Low-level, operational dashboard highlighting the various challenges within vacancy (such as long term vacancy and vacancy with consumption and registration)	Trading Party Performance	Active	25/05/2023	MyMOSL	Restricted	Trading Parties	Month	Business Day 2	<a href="#">View</a>
Water Efficiency dashboard	Overview of water consumption and related carbon emissions, using enriched CMOS data, for each trading party and each customer industry segment in relevant areas: water resource planning regions, water stress areas and WRZs	Environmental Impact	Active	04/08/2021	MOSL website	Public	All	Month	Business Day 9	<a href="#">View</a>
Water Efficiency dashboard (extract)	Detailed view of water consumption and related carbon emissions, using enriched CMOS data, for each trading party and each customer industry segment in relevant areas: water resource planning regions, water stress areas and WRZs	Environmental Impact	Active	25/05/2023	MyMOSL	Restricted	Trading Parties	Month	Business Day 9	<a href="#">View</a>
Wholesaler Settlement dashboard	Analysis of wholesaler settlement data based on key metrics: actual meter reads, estimated consumption, estimated accuracy, age of last meter read and missed meter reads	Wholesaler Settlement	Active	25/05/2023	MyMOSL	Restricted	Trading Parties	Month	Business Day 9	<a href="#">View</a>



## 2. Maps (1/3)

Interactive geographic visualisations of market data, aggregated spatially by regions such as wholesaler, water resource management planning and postal sector. Users can move around the maps and use the search functionality and gazetteer to identify specific locations. Map areas can also be clicked on to display further attributes.

Title	Description	Subject	Status	Release date	Channel	Access level	Audience	Refresh frequency	Refresh date	Link
Customer meter reads by postal sector map	Interactive map view of the different rates of meter reads made by non-household customers over the total valid meter reads for each postal sector and wholesaler region	Meter Reads	Active	14/02/2022	MOSL website	Public	All	Quarter		<a href="#">View</a>
Drought Restrictions map	Interactive map view of the current drought restriction status, provided by the water companies for each Water Resource Zone (WRZ) and postal sector in England and Wales	Environmental Impact	Active	17/08/2022	MOSL website	Public	All	Day		<a href="#">View</a>
Long Unread Meters (LUMs) by postal sector map	Interactive map view of the number of LUMs in the non-household water market within each postal sector	Trading Party Performance	Active	15/12/2022	MOSL website	Public	All	Quarter		<a href="#">View</a>
Metered SPIDs by water wholesaler map	Interactive map view of the proportion of metered supply points by water wholesaler, namely the percentage of water supply points with at least one active meter in each wholesaler region	Market Meters	Active	20/01/2022	MOSL website	Public	All	Quarter		<a href="#">View</a>
Remote meter reads by postal sector map	Interactive map view of the different rates of meter reads collected automatically (smart meters) over the total valid meter reads in the non-household water market for each postal sector and wholesaler region	Meter Reads	Active	14/02/2022	MOSL website	Public	All	Quarter		<a href="#">View</a>



## 2. Maps (2/3)

Title	Description	Subject	Status	Release date	Channel	Access level	Audience	Refresh frequency	Refresh date	Link
Sewerage switching by wholesale region map	Interactive map view of the different rates of sewerage supply points that have been switched since market opening, within each wholesale region	Switching	Active	02/12/2022	MOSL website	Public	All	Quarter		<a href="#">View</a>
Trading Party location map	Interactive map view of the location of trading parties, categorised as wholesaler, retailer or self-supply retailer, using office addresses	Supply and Services	Active	31/12/2021	MOSL website	Public	All	As required	As required	<a href="#">View</a>
Water consumption by postal sector map	Interactive map view of the levels of water consumed by non-household supply points for each postal sector in England and Wales, based on the best view of consumption from CMOS settlement averaged across the previous 18-months	Environmental Impact	Active	28/07/2022	MOSL website	Public	All	Month		<a href="#">View</a>
Water meters by postal sector map	Interactive map view of the number and density of active non-household water meters within each postal sector	Market Meters	Active	11/08/2022	MOSL website	Public	All	Quarter		<a href="#">View</a>
Water Resource Planning Regions map	Map view of boundaries, names and links to website for the five Water Resource Planning regions, as well as Natural Resource Wales	Environmental Impact	Active	03/08/2021	MOSL website	Public	All	As required	As required	<a href="#">View</a>
Water Resource Zones (WRZs) map	Map view of boundaries, names and Water Resource Management Plan 19 (WRMP19) water deficit Dry Year Annual Average (DYAA) categories for the 133 WRZs in England and Wales	Environmental Impact	Active	03/08/2021	MOSL website	Public	All	As required	As required	<a href="#">View</a>



## 2. Maps (3/3)

Title	Description	Subject	Status	Release date	Channel	Access level	Audience	Refresh frequency	Refresh date	Link
Water scarcity by postal sector map	Interactive map view of the current water scarcity indicators, namely Water Deficit Designation and Water Stress Designation, for each WRZ the Environment Agency (EA)'s Water Body, and for each postal sector	Environmental Impact	Active	15/03/2022	MOSL website	Public	All	Day		<a href="#">View</a>
Water Stress Areas map	Map view of boundaries, names and EA designation (2021) for the 23 water stress areas in England	Environmental Impact	Active	24/02/2022	MOSL website	Public	All	As required	As required	<a href="#">View</a>
Water switching by wholesale region map	Interactive map view of the different rates of water supply points that have been switched since market opening within each wholesale region	Switching	Active	01/12/2022	MOSL website	Public	All	Quarter		<a href="#">View</a>



# 3. Market summaries and metrics

Title	Description	Subject	Status	Release date	Channel	Access level	Audience	Refresh frequency	Refresh date	Link
Bilaterals Hub Deregistered SPID report	Daily report to show active requests that are raised for Deregistered SPIDs. Collates data from the Bilaterals hub (Cosmos) and CMOS	Supply and Services	Active	30/05/2022	MOSL portal	Restricted	Trading Parties	Day	Daily	
Erroneous Transfers report	Report on erroneous transfers (type description, transaction code, status, count, cancellation code, cancellation reason)	Wholesaler Settlement	Active	25/10/2019	MOSL portal	Restricted	Ofwat	Cumulative	Business day 6	
Key Performance Indicators (KPIs) market metrics	Market level metrics on one page	Market Performance	Planned		TBC MOSL website	Public	All	Month		



# 4. Data Import

Title	Description	Subject	Status	Release date	Channel	Access level	Audience	Refresh frequency	Refresh date	Link
Geographic Information System (GIS) Data Assurance for Holistic Reporting	Import, processing and validation (or rejection) of GIS data, for Holistic Reporting purposes, uploaded by trading parties in their own MOSL SharePoint site (Market Performance > Data Assurance)	Metrics	Active	04/05/2022	MOSL SharePoint	Restricted	Trading Parties	Month		Five business days before month end
Premises Data Assurance for Holistic Reporting	Import, processing and validation (or rejection) of premises data, for Holistic Reporting purposes, uploaded by trading parties in their own MOSL SharePoint site (Market Performance > Data Assurance)	Metrics	Active	04/05/2022	MOSL SharePoint	Restricted	Trading Parties	Month		Five business days before month end
Wholesaler smart meter and logger data share	Facility to allow wholesalers to share granular consumption data for wider market use	Meter Reads	Active		MOSL SharePoint	Restricted	Trading Parties			



# 5. Enriched market data (1/3)

Enriched market data at meter, supply point or premises level provided to trading parties, Ofwat or authorised parties, such as Water Resource Management Groups or Market Improvement Fund (MIF) project groups.

Title	Description	Subject	Status	Release date	Channel	Access level	Audience	Refresh frequency	Refresh date	Link
Ad hoc granular data request by Industry Group	Ad hoc requests from industry groups for granular market data on specific areas of the market	Market Performance	Active	01/04/2017	Email	Restricted	Retailer Wholesaler Group			<a href="mailto:performance@mosl.co.uk">performance@mosl.co.uk</a>
Ad hoc granular data request by other organisation	Ad hoc requests from other organisations for granular market data on specific subject areas of the market	Market Performance	Active	01/04/2017	Email	Restricted	All			<a href="mailto:performance@mosl.co.uk">performance@mosl.co.uk</a>
Ad hoc granular data request by Regulator	Ad hoc requests from regulatory authorities for granular market data on specific subject areas of the market	Market Performance	Active	01/04/2017	Email	Restricted	Ofwat			<a href="mailto:performance@mosl.co.uk">performance@mosl.co.uk</a>
Ad hoc granular data request by Trading Party	Ad hoc requests from trading parties for granular market data on specific subject areas of the market	Market Performance	Active	01/04/2017	MyMOSL	Restricted	Trading Parties			<a href="#">View</a>
Ad hoc summary data request by Industry Group	Ad hoc requests from Industry Groups for aggregated market data on specific subject areas of the market	Market Performance	Active	01/04/2017	Email	Public	Retailer Wholesaler Group			<a href="mailto:performance@mosl.co.uk">performance@mosl.co.uk</a>
Ad hoc summary data request by other organisation	Ad hoc requests from other organisations for aggregated market data on specific subject areas of the market	Market Performance	Active	01/04/2017	Email	Public	All			<a href="mailto:performance@mosl.co.uk">performance@mosl.co.uk</a>
Ad hoc summary data request by Regulator	Ad hoc requests from regulatory authorities for aggregated market data on specific subject areas of the market	Market Performance	Active	01/04/2017	Email	Public	Ofwat			<a href="mailto:performance@mosl.co.uk">performance@mosl.co.uk</a>





# 5. Enriched market data (2/3)

Title	Description	Subject	Status	Release date	Channel	Access level	Audience	Refresh frequency	Refresh date	Link
Ad hoc summary data request by Trading Party	Ad hoc requests from trading parties for aggregated market data on specific subject areas of the market	Market Performance	Active	01/04/2017	MyMOSL	Restricted	Trading Parties			<a href="#">View</a>
Bilateral Hub SLA detailed report (daily)	Daily SLA Detail Report, collating data from Bilateral hub (i.e. Cosmos, SQL, and Notifications)	Supply and Services	Active	27/09/2021	MOSL portal	Restricted	Trading Parties	Day		
Bilateral Hub SPID report	SPID report, collating various data from the Bilateral hub (Cosmos, SQL and Notifications) and CMOS	Supply and Services	Active	22/09/2021	MOSL portal	Restricted	All	Hour		
MIF LIDA2 industry segmentation extract	Extract to support MIF LIDA2 analysis of usage patterns by industry type	Supply and Services	Active		MOSL SharePoint	Restricted	Trading Parties			
MIF Tariff extract	Extract to support MIF Tariff simplification analysis being led by RWG Tariff group	Wholesaler Settlement	Active		MOSL SharePoint	Restricted	Trading Parties			
Summary backing data from maps	Download of summary data behind specific maps (such as the water consumption map) in Excel format	Market Performance	Active	01/09/2022	MOSL website	Public	All	Month		
Trading Party Meter extracts (latest)	Weekly extraction of the latest metering data for each trading party, exported in their own MOSL SharePoint site (Market Performance > Data Share > Latest)	Meter Reads	Active	13/02/2023	MOSL SharePoint	Restricted	Trading Parties	Week		
Trading Party Meter extracts (monthly)	Monthly extraction of metering data for each trading party, exported in their own MOSL SharePoint site (Market Performance > Data Share > YYYY-MM-DD)	Meter Reads	Active	01/02/2022	MOSL SharePoint	Restricted	Trading Parties	Month		
Trading Party Premises extracts (latest)	Weekly extraction of the latest premises data for each trading party, exported in their own MOSL SharePoint site (Market Performance > Data Share > Latest)	Supply and Services	Active	13/02/2023	MOSL SharePoint	Restricted	Trading Parties	Week		



# 5. Enriched market data (3/3)

Title	Description	Subject	Status	Release date	Channel	Access level	Audience	Refresh frequency	Refresh date	Link
Trading Party Premises extracts (monthly)	Monthly extraction of premises data for each trading party, exported in their own MOSL SharePoint site (Market Performance > Data Share > YYYY-MM-DD)	Supply and Services	Active	01/02/2022	MOSL SharePoint	Restricted	Trading Parties	Month		
Trading Party Vacancy extracts (monthly)	Monthly extraction of vacancy data for each Trading Party, exported in their own MOSL SharePoint site (Market Performance > Data Share > YYYY-MM-DD)	Occupancy	Active	01/02/2022	MOSL SharePoint	Restricted	Trading Parties	Month		
Water Resource Management Plan (WRMP) extract	Enriched market data to support water resource management planning, showing industry type, water resource zone and consumption banding by water resource management plan region	Supply and Services	Active		MOSL SharePoint	Restricted	Trading Parties			



# 6. Formatted data

Title	Description	Subject	Status	Release date	Channel	Access level	Audience	Refresh frequency	Refresh date	Link
Carbon Emissions monthly report	Statement to estimate the greenhouse gas emissions by each Trading Party from treating water and sewerage in the non-household water market, based on volume-based service component charges, for a specific month period	Environmental Impact	Active	05/11/2021	MOSL SharePoint	Restricted	Trading Parties	As required	Monthly	
Carbon Emissions yearly report	Statement to estimate the greenhouse gas emissions by each trading party from treating water and sewerage in the non-household water market, based on volume-based service component charges, for a specific month period	Environmental Impact	Active	14/11/2022	MOSL SharePoint	Restricted	Trading Parties	Year	Yearly	
Retailer Measure of Experience (R-MeX) report	Deck of reports, customised for each trading party, providing a detailed view of the results of all R-MeX surveys, a measurement of wholesaler service to their retailers	Trading Party Performance	Active	04/12/2020	MOSL SharePoint	Restricted	Trading Parties	Half-year	Two weeks after survey deadline	
Trading Party Survey report	Deck of reports, customised for each trading party, providing a detailed view of the results of the annual Trading Party Survey, in which members rate the performance of the trading operator against the key services set out in the Market Services Framework	Market Performance	Active	20/10/2022	MOSL SharePoint	Restricted	Trading Parties	Half-year	Two weeks after survey deadline	



# 7. Application Programming Interface (API)

Title	Description	Subject	Status	Release date	Channel	Access level	Audience	Refresh frequency	Refresh date	Link
Ofwat API connection	API connection to MOSL data warehouse for Ofwat to directly access market data	Metrics	Active	01/09/2020	API	Restricted	Ofwat	As required		



# 8. Data Analysis

Knowledge that the market has gained from analysing data pertaining to a given topic or situation.

Title	Description	Subject	Status	Release date	Channel	Access level	Audience	Refresh frequency	Refresh date	Link
Ad hoc data analysis request by Industry Group	Ad hoc requests from industry groups for data analysis on specific subject areas of the market	Market Performance	Active	01/04/2017	Email	Restricted	Retailer Wholesaler Group			<a href="mailto:performance@mosl.co.uk">performance@mosl.co.uk</a>
Ad hoc data analysis request by other organisation	Ad hoc requests from other organisations for data analysis on specific subject areas of the market	Market Performance	Active	01/04/2017	Email	Restricted	All			<a href="mailto:performance@mosl.co.uk">performance@mosl.co.uk</a>
Ad hoc data analysis request by Regulator	Ad hoc requests from regulatory authorities for data analysis on specific subject areas of the market	Market Performance	Active	01/04/2017	Email	Restricted	Ofwat			<a href="mailto:performance@mosl.co.uk">performance@mosl.co.uk</a>
Ad hoc data analysis request by Trading Party	Ad hoc requests from trading parties for data analysis on specific subject areas of the market	Market Performance	Active	01/04/2017	MyMOSL	Restricted	Trading Parties			<a href="#">View</a>



# 9. Data Insight

Knowledge that MOSL is sharing from analysing data and context pertaining to a given topic or situation.

Title	Description	Subject	Status	Release date	Channel	Access level	Audience	Refresh frequency	Refresh date	Link
Blog - Be aware, compare and share	Blog about learning from the non-household market and how data helps us reconnect with the natural environment and make improvements	Environmental Impact	Active	27/05/2022	MOSL website	Public	All	As required	As required	<a href="#">View</a>
Blog - Data insights support COP27 Together for implementation	Blog about the role non-household customers can make to support the climate change agenda	Environmental Impact	Active	18/11/2022	MOSL website	Public	All	As required		
Blog - Mind your business: putting water efficiency on the map	Blog about eight things the creation of the non-household market has enabled us to learn about its customers that can help encourage water efficiency	Environmental Impact	Active	20/05/2020	MOSL website	Public	All	As required	As required	<a href="#">View</a>
Data insights support COP27 Together for implementation	As world leaders meet at COP27 this month, MOSL is playing its part to support the climate change agenda from its position at the heart of the world's largest competitive non-household water market	Environmental Impact	Active	18/11/2022	MOSL website	Public	All	As required	As required	<a href="#">View</a>
Monthly market statistic	A topical monthly statistic provided in MOSL's Market Focus newsletter	Market Performance	Active	11/01/2022	MOSL Market Focus	Public	All	Month		<a href="#">View</a>
Unexpected Meter Reads dashboard	Calculates the variance with previous meter reads and displays a chart	Meter Reads	Active	25/05/2023	MyMOSL	Restricted	Trading Parties	Day		<a href="#">View</a>



# 10. Supporting Information (1/3)

Artefacts that describe the market data used by the data services, the way data is stored and how MOSL’s data and data services are used, managed and improved.

Title	Description	Subject	Status	Release date	Channel	Access level	Audience	Refresh frequency	Refresh date	Link
Central Data Cleanse	Webpage with details of the Central Data Cleanse service	Market Performance	Active	23/01/2023	MOSL website	Public	All	As required	As required	<a href="#">View</a>
Data and Analytics Roadmap	Outlines the underlying activities and timings that will be undertaken to achieve the outcomes contained in the Market Data Strategy	Market Performance	Active	30/06/2022	MOSL website	Public	All	As required	As required	<a href="#">View</a>
Data User Personas	A series of Data User Personas created by MOSL to further demonstrate the true cost and value of the data used in the non-household market	Market Performance	Active	19/07/2022	MOSL website	Public	All	As required	As required	<a href="#">View</a>
H2Open - Open data in the water industry: a case for change	Ofwat paper (available on their website) outlining their initial views on how open data can enable water companies to create value for water customers, communities and the environment	Market Performance	Active	01/10/2021	External website	Public	All	As required	As required	<a href="#">View</a>
Market data and information charter	The charter defines the principles of data and information management and outlines MOSL’s commitments to the market	Market Performance	Active	19/10/2021	MOSL website	Public	All	As required	As required	<a href="#">View</a>
Market Insight introductory video	Video introducing the Market Insight page on the MOSL website	Market Performance	Active		MOSL website	Public	All	As required	As required	<a href="#">View</a>
Meter and Premises data extracts guideline	Guidance to Trading Parties on extracting MOSL's meter and premises data, with particular regards to preserving leading 0s in Excel files	Market Meters	Active		MOSL website	Public	All	As required	As required	<a href="#">View</a>



# 10. Supporting Information (2/3)

Title	Description	Subject	Status	Release date	Channel	Access level	Audience	Refresh frequency	Refresh date	Link
Metering dashboard Q&A training	Video demonstrating the kind of questions that can be answered using the Metering dashboard	Meter Reads	Active		MOSL website	Public	All	As required	As required	<a href="#">View</a>
Metric Converter	Downloadable utility in Excel that allows the user to convert water consumption figures (daily, monthly and yearly) between litres, cube meters and megalitres	Metrics	Active	01/07/2023	MOSL website	Public	All			<a href="#">View</a>
Monthly Extracts Data Items reference	Reference document that illustrates all the data items (namely, attributes, or fields) present in the three monthly data extracts (Meter, Premise and Vacancy). Updated as required and shared with each Trading Party in the Data Share folder in their own section of MOSL SharePoint		Active	15/12/2022	MOSL SharePoint	Restricted	Trading Parties	As required		
MOSL 2022-25 Business Plan	MOSL's business plan for 2022-25, which includes details on the Data Insight improvement programme	Market Performance	Active	25/02/2022	MOSL website	Public	All	Year		<a href="#">View</a>
MOSL 2023-26 Business Plan	MOSL's business plan for 2023-26, which includes details on the Data Insight improvement programme	Market Performance	Active	07/02/2023	MOSL website	Public	All	Year		<a href="#">View</a>
MOSL Market Data Strategy	Building on the Market Data and Information Charter, the strategy sets out how data and information will be used to achieve the strategic goals of the market as outlined in our Strategic Architecture and 2022-25 Business Plan and the priorities voiced by trading parties, Ofwat and CCW	Market Performance	Active	30/06/2022	MOSL website	Public	All	As required	As required	<a href="#">View</a>
MOSL response to draft Government Data Strategy	MOSL's response to the draft Government Data Strategy to ensure non-household market issues are considered in its final strategy	Market Performance	Active	08/12/2020	MOSL website	Public	All	As required	As required	<a href="#">View</a>





# 10. Supporting Information (3/3)

Title	Description	Subject	Status	Release date	Channel	Access level	Audience	Refresh frequency	Refresh date	Link
MOSL Strategic Architecture	Document defining the strategic direction of MOSL from 2021-24	Market Performance	Active		MOSL website	Public	All	As required	As required	<a href="#">View</a>
Request for information: Core Market Data Cleanse	An RFI to help inform the planning and prioritisation of MOSL's data cleanse activity	Market Performance	Active	19/10/2019	MOSL website	Public	All	As required	As required	<a href="#">View</a>
Switching dashboard Q&A training	Video demonstrating the kind of questions that can be answered using the Switching dashboard	Switching	Active		MOSL website	Public	All	As required	As required	<a href="#">View</a>
Using Power BI dashboards guidance	Introduction to Power BI dashboard features and explanation of some of the commonalities between different MOSL dashboards	Market Performance	Active		MOSL website	Public	All	As required	As required	<a href="#">View</a>
Water and Sewerage company boundaries	Ofwat water and sewerage company boundaries shape file	Market Performance	Active		External website	Public	All	5 years	TBC	
Water Resource Zone GIS data (WRMP19)	Environment Agency collated Water Resource Zone boundaries 2019 (Defra Data Services Platform)	Environmental Impact	Active		External website	Public	All	5 years	TBC	



## Further contact

If you have any questions or would like to discuss any of the data services, please email [performance@mosl.co.uk](mailto:performance@mosl.co.uk).

MOSL  
White Building  
1-4 Cumberland Pl  
Southampton SO15 2NP

[comms@mosl.co.uk](mailto:comms@mosl.co.uk)  
[mosl.co.uk](http://mosl.co.uk)

Market Operator Services Limited (MOSL) is registered in England and Wales. Registered No: 09276929.

**MOSL**  
MARKET OPERATOR SERVICES LTD